



FONDI PER LAVASTOVIGLIE INDUSTRIALI

DISHWASHER TANKS

BECKEN FÜR SPÜLMASCHINE

BACS POUR LAVE-VAISSELLE

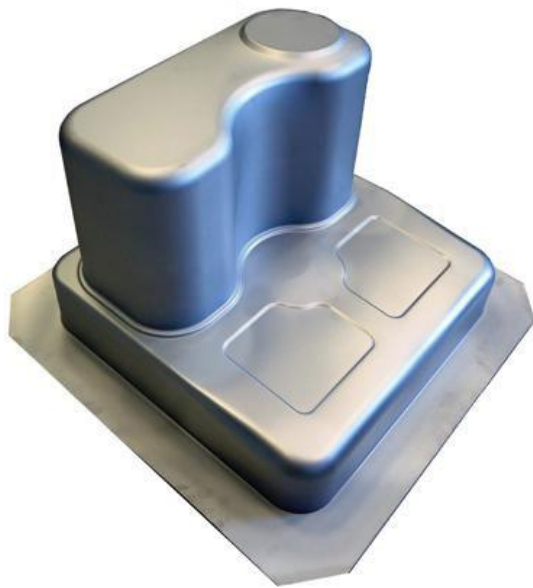


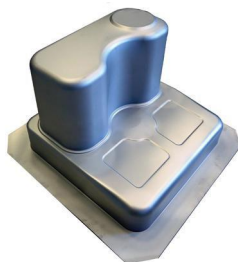
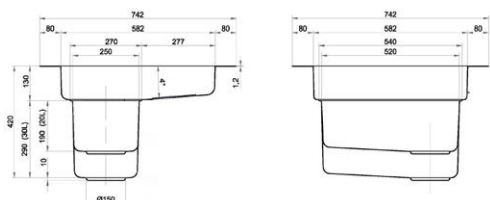
Le vasche per lavastoviglie sono prodotte in acciaio inossidabile AISI 304 PS 9%Ni con spessori da 0,8 fino a max 1,5 mm. Sono corredate di fori di scarico da 3/4" o 1". Le vasche hanno finitura decapata o sabbiata. Possono essere rifilate o forate a laser 3D come da disegno del cliente.

The dishwasher tanks are produced in stainless steel AISI 304–1.4301, thickness from 0,8 up to a max of 1,5 mm. They are manufactured with drain hole 3/4" or 1" and have satin or sand blasted finishing. They can be trimmed or pierced with 3D laser according to customer's drawing.

Die Becken für Spülmaschinen sind in AISI 304 – 1.4301 Edelstahl mit Dicke vom 0,8 bis zum höchstens 1,5 mm hergestellt. Sie sind mit 3/4" oder 1" Abflussloch produziert und sind mit satinierter oder sandgestrahlter Politur verfügbar. Sie können geschnitten oder mit 3D Laser nach der Zeichnung des Kunden gelocht werden.

Les bacs pour lave vaisselles sont produites en acier inoxydable AISI 304 – 1.4301, épaisseurs de 0,8 jusqu'à max 1,5 mm. Elles sont disponibles avec trou de vidage 3/4" ou 1" et avec finition décapé ou grenailé à sable. Elles peuvent être coupés ou percé avec laser 3D selon le dessin du client.





SERIES DN01

Deep Drawing Quality NI 9%
Pickled Finishing
Laser cutting as per customer's drawings

CODICE CODE	CAPACITÀ VASCA TANK CAPACITY	MATERIALE MATERIAL
P.D13.DN0120	20 L	AISI 304 EN 1.4301 12/10 mm
P.D13.DN0125	25 L	AISI 304 EN 1.4301 12/10 mm
P.D13.DN0130	30 L	AISI 304 EN 1.4301 12/10 mm

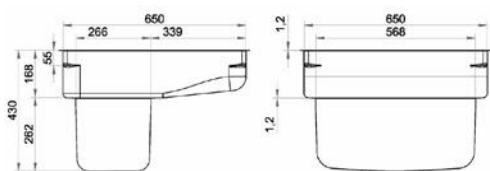
FILTERS FOR SERIES DN01

Code P.D13.DN01 Filtro Aus

Code P.D13.DN01 Filtro Aus 1

Code P.D13.DN01 Filtroa

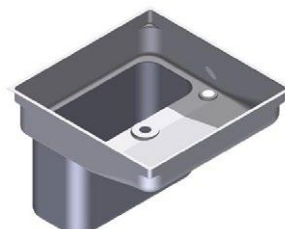
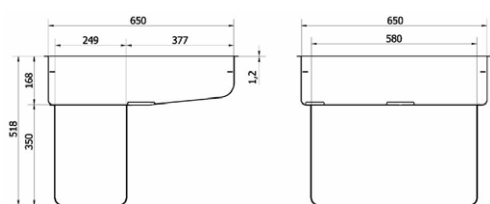
Code Q.T01.Filtro



SERIES DN10

Deep Drawing Quality NI 9%
Pickled Finishing
Laser cutting as per customer's drawings

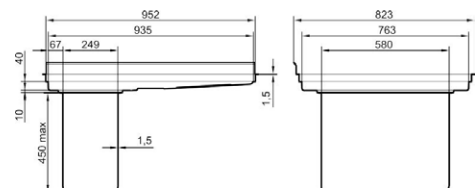
CODICE CODE	CAPACITÀ VASCA TANK CAPACITY	MATERIALE MATERIAL
P.D13.DN1035	35 L	AISI 304 EN 1.4301 12/10 mm



SERIES DN12

Deep Drawing Quality NI 9%
Pickled Finishing
Laser cutting as per customer's drawings

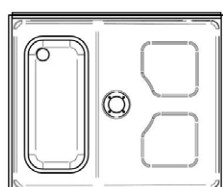
CODICE CODE	CAPACITÀ VASCA TANK CAPACITY	MATERIALE MATERIAL
P.D13.DN1240	40 L	AISI 304 EN 1.4301 12/10 mm
P.D13.DN1250	50 L	AISI 304 EN 1.4301 12/10 mm

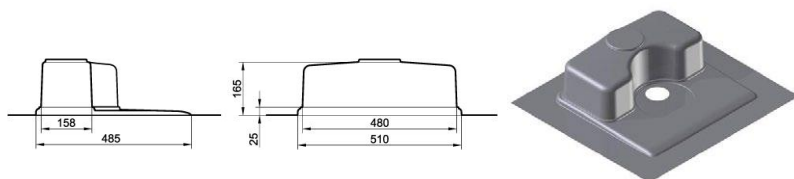


SERIES DN13 LAVA OGGETTI - PAN WASHER

Deep Drawing Quality NI 9%
Pickled Finishing
Laser cutting as per customer's drawings

CODICE CODE	CAPACITÀ VASCA TANK CAPACITY	MATERIALE MATERIAL
P.D13.DN1340	40 L	AISI 304 EN 1.4301 15/10 mm
P.D13.DN1260	60 L	AISI 304 EN 1.4301 15/10 mm





Code P.D13.LS09 Filtro Aus

Code Q.T07 - Filtro



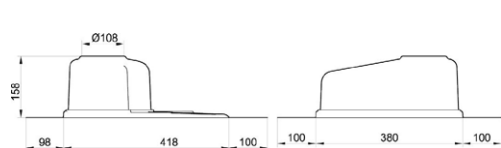
SERIES LS09 SOTTOBANCO - UNDERCOUNTER 50x50

Deep Drawing Quality NI 9%

Pickled Finishing

Laser cutting as per customer's drawings

CODICE CODE	CAPACITÀ VASCA TANK CAPACITY	MATERIALE MATERIAL
P.D13.LS09	9 L	AISI 304 EN 1.4301 10/10 mm



Code P.D13.LS07 Filtro Aus

Code Q.T07 Filtro



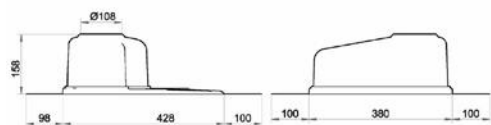
SERIES LS06 LAVABICCHIERI - GLASSWASHER 40X40

Deep Drawing Quality NI 9%

Pickled Finishing

Laser cutting as per customer's drawings

CODICE CODE	CAPACITÀ VASCA TANK CAPACITY	MATERIALE MATERIAL
P.D13.LS06	7 L	AISI 304 EN 1.4301 10/10 mm



Code P.D13.LS07 Filtro Aus



SERIES LS07 LAVABICCHIERI - GLASSWASHER 45X45

Deep Drawing Quality NI 9%

Pickled Finishing

Laser cutting as per customer's drawings

CODICE CODE	CAPACITÀ VASCA TANK CAPACITY	MATERIALE MATERIAL
P.D13.LS07	7 L	AISI 304 EN 1.4301 8/10 mm



DAVIGHI INTERNATIONAL SRL

Via Sardegna, 7 20090 Pieve Emanuele Milano - Italy

T. +39 02 90.42.20.60 | F. +39 02 90.42.18.39

info@davighi-international.com

www.davighi-international.com



[davighi_international_milano](https://www.instagram.com/davighi_international_milano)



[DavighiInternational](https://www.facebook.com/DavighiInternational)

