



VASCHE A SALDARE

BOWLS TO WELD

CUVES À SOUDER



E' una vasta gamma di vasche in diverse dimensioni e profondità, impiegate nella costruzione di lavelli per grandi impianti, di top per banchi bar e arredamenti di laboratori medicali e scientifici. Sono prodotte in acciaio inox AISI 304 in spessore 1 mm e fornite con bordi arrotondati, complete di foro di scarico per diversi modelli di piletta.

La finitura standard è satinata a scotchbrite, ma possono essere eseguite finiture opzionali semilucide o lucide a specchio.

A commessa possono essere prodotte anche in acciaio inox AISI 316.

A wide range of bowls in various sizes and depths used in the production of catering sinks, bar counter tops and as equipment for medical and scientific laboratories.

They are manufactured in stainless steel AISI 304 with a thickness of 1 mm; they are supplied with rounded rims and a drain hole for various models of outlets. Standard finishing is in scotch-brite with semi-bright or mirror-bright optional finishings.

If requested, all models may be produced in stainless steel AISI 316.

C'est une vaste gamme de cuves en plusieurs dimensions et profondeurs, employées dans la construction des éviers, des tops pour les comptoirs des cafés et pour l'ameublements des laboratoires médicaux et scientifiques.

Elles sont réalisées en acier inox AISI 304, épaisseur 1 mm, avec bords arrondis, avec trou de vidange pour différents modèles de bonde.

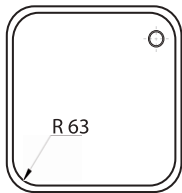
Le polissage standard est à scotchbrite, mais il peut être, à la demande du client, demi-brillant ou brillant.

Sur requête, tous les modèles peuvent être produits aussi en acier inox AISI 316.

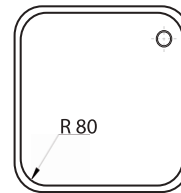




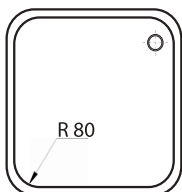
VASCHE PER GRANDI IMPIANTI
BOWLS FOR CATERING EQUIPMENT
BACS POUR INSTALLATIONS PROFESSIONELLES



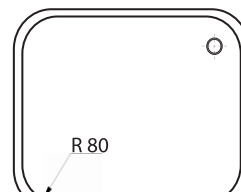
CODICE CODE	DIMENSIONI DIMENSIONS
D02 404020 R <i>ricotta / annealed</i>	400 x 400 x 200
D02 404025 R <i>ricotta / annealed</i>	400 x 400 x 250
D02 404030 R <i>ricotta / annealed</i>	400 x 400 x 300



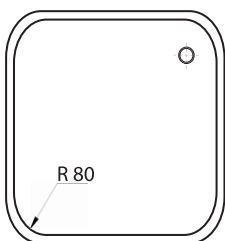
CODICE CODE	DIMENSIONI DIMENSIONS
D02 404020	400 x 400 x 200
D02 404025	400 x 400 x 250
D02 404030	400 x 400 x 300



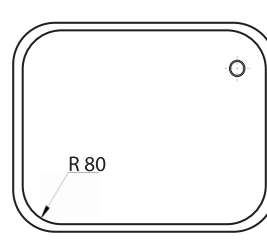
CODICE CODE	DIMENSIONI DIMENSIONS
D02 454520	450 x 450 x 200
D02 454525	450 x 450 x 250
D02 454530	450 x 450 x 300



CODICE CODE	DIMENSIONI DIMENSIONS
D02 504020	500 x 400 x 200
D02 504025	500 x 400 x 250
D02 504030	500 x 400 x 300
D02 504030 R <i>ricotta / annealed</i>	500 x 400 x 300



CODICE CODE	DIMENSIONI DIMENSIONS
D02 505025	500 x 500 x 250
D02 505030	500 x 500 x 300
D02 505030 R <i>ricotta / annealed</i>	500 x 500 x 300
D02 505035 R <i>ricotta / annealed</i>	500 x 500 x 350

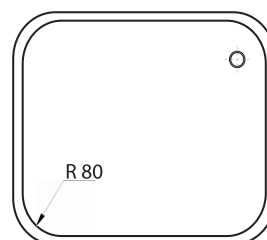


CODICE CODE	DIMENSIONI DIMENSIONS
D02 604525 R <i>ricotta / annealed</i>	600 x 450 x 250
D02 604530 R <i>ricotta / annealed</i>	600 x 450 x 300
D02 604535 R <i>ricotta / annealed</i>	600 x 450 x 350

*Nell'ordine di vasche specificare
il tipo e la posizione del foro di scarico.*

*In the order of bowls, please
specify the type and the position of the drain hole.*

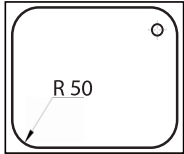
*Dans la commande de bacs il faut
spécifier le type et la position du trou de vidange.*



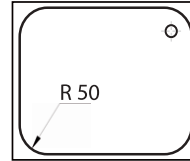
CODICE CODE	DIMENSIONI DIMENSIONS
D02 605025	600 x 500 x 250
D02 605030	600 x 500 x 300
D02 605032	600 x 500 x 320
D02 605035 R <i>ricotta / annealed</i>	600 x 500 x 350



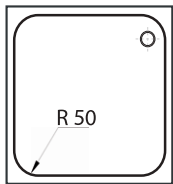
VASCHE BANCHI BAR
BOWLS FOR BAR COUNTERS
BACS POUR COMPTOIRS DE CAFÈS



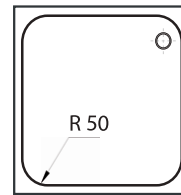
CODICE CODE	DIMENSIONI DIMENSIONS
D02 293418 R <i>ricotta / annealed</i>	290 x 340 x 180
D02 293420 R <i>ricotta / annealed</i>	290 x 340 x 200



CODICE CODE	DIMENSIONI DIMENSIONS
D02 294020 R <i>ricotta / annealed</i>	290 x 400 x 200



CODICE CODE	DIMENSIONI DIMENSIONS
D02 333316 R <i>ricotta / annealed</i>	330 x 330 x 160
D02 333318 R <i>ricotta / annealed</i>	330 x 330 x 180
D02 333320 R <i>ricotta / annealed</i>	330 x 330 x 200



CODICE CODE	DIMENSIONI DIMENSIONS
D02 344016 R <i>ricotta / annealed</i>	340 x 400 x 160
D02 344018 R <i>ricotta / annealed</i>	340 x 400 x 180
D02 344020 R <i>ricotta / annealed</i>	340 x 400 x 200
D02 344025 R <i>ricotta / annealed</i>	340 x 400 x 250

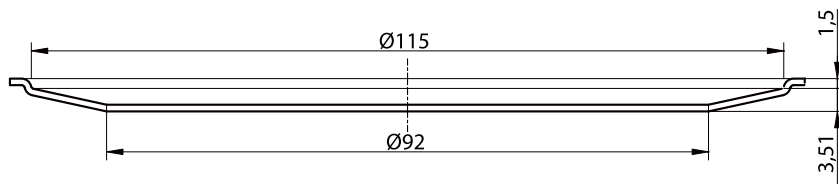
*Nell'ordine di vasche specificare
il tipo e la posizione del foro di scarico.*

*In the order of bowls, please
specify the type and the position of the drain hole.*

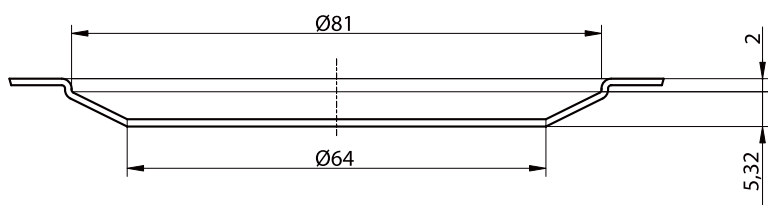
*Dans la commande de bacs il faut
spécifier le type et la position du trou de vidange.*



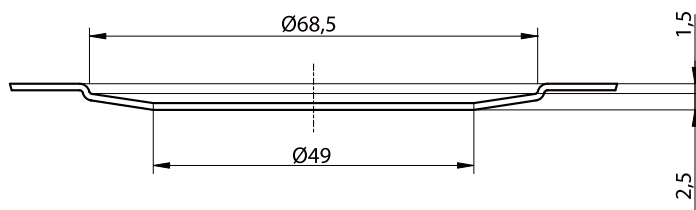
FORATURE DI SCARICO DISPONIBILI
DRAIN HOLES AVAILABLE
TROUS DE VIDANGE RÉALISABLES



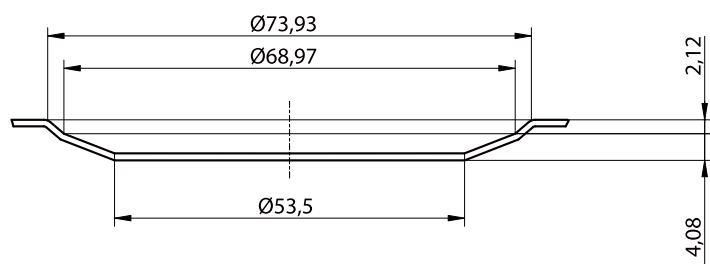
A
FORO PER PILETTA DA 3"1/2
DRAIN HOLE 3" 1/2



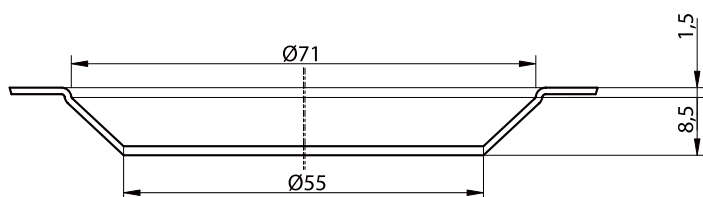
B
FORO PER PILETTA DA 2"
DRAIN HOLE 2"
TROU DE VIDANGE 2"



C
FORO PER PILETTA DA 1" 1/2
DRAIN HOLE 1" 1/2
TROU DE VIDANGE 1" 1/2



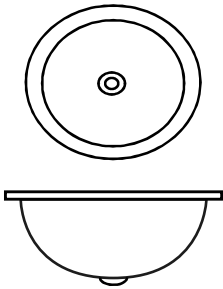
E
FORO PER PILETTA DA 1" 1/2
DRAIN HOLE 1" 1/2
TROU DE VIDANGE 1" 1/2



F
FORO PER PILETTA DA 1" 1/2
DRAIN HOLE 1" 1/2
TROU DE VIDANGE 1"1/2



VASCHE SEMISFERICHE E CILINDRICHE
SEMI-SPHERICAL AND CYLINDRICAL BOWLS
CUVES SEMI-SPHERIQUES ET CYLINDRIQUES



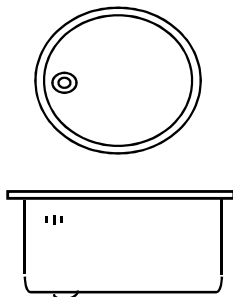
CODICE CODE	MOD. DIAM. DIMENSIONS	ALTEZZA mm HIGHT mm
C02.VA20115 SBI	200	110
C02.VA2613 SBI	260	130
C02.VA3014 SBI	300	140
C02.VA3615 SBI	360	150
C02.VA38155 SBI	380	155
C02.VA4216 SBI	420	160

**Vasche semisferiche realizzate in acciaio inox
AISI 304**

- spessore mm. 1
- finitura lucida sia all'interno che all'esterno.

Semi-spherical bowls in AISI 304 stainless steel
- Thickness 1 mm
- mirror mechanical polish inside

Cuves semi-sphériques en acier inoxydable AISI 304
- épaisseur 1 mm
- finition mécanique lustrée à l'intérieur



CODICE CODE	MOD. DIAM. DIMENSIONS	ALTEZZA mm HIGHT mm
CO2.VA2618 BI	260	180
CO2.VA30125 BI	300	125
P.D02.VA3018 BI	300	180
CO2.VA3618 BI	360	180
CO2.VA3818 BI	380	180
CO2.VA4218 BI	420	180

**Vasche cilindriche realizzate in acciaio inox
AISI 304**

- spessore mm. 1
- finitura lucida sia all'interno che all'esterno.
- il prezzo è comprensivo della foratura di troppo-pieno

Cylindrical bowls in AISI304 stainless steel
- Thickness mm. 1
- mirror mechanical polish inside
- the price includes the overflow hole

Cuves cylindriques en acier inoxydable AISI304
- épaisseur 1 mm
- finition mécanique lustrée à l'intérieur
- le prix comprend le trou du trop-plein

ACCESSORI ACCESSORIES	CODICE CODE
Piletta per vasche semisferiche Outlet for semi-spherical bowls Vidange pour cuves semi-sphériques	T01. P. 1- 1 ½"
Piletta con troppo-pieno per vasche cilindriche Outlet with overflow for cylindrical bowls Vidange avec trop plein pour cuves cylindriques	T01. PM1 ½" TPA2

Tutte le vasche semisferiche e cilindriche possono essere fornite con bordo incasso o con bordo piano.
All the semi-spherical and cylindrical bowls can be supplied both with inset edge and flat edge
Toutes les cuves semi-sphériques et cylindriques peuvent être fournis avec bord à encastrer ou bord plan.



DAVIGHI INTERNATIONAL SRL

Via Sardegna, 7 20090 Pieve Emanuele Milano - Italy
T. +39 02 90.42.20.60 | F. +39 02 90.42.18.39

info@davighi-international.com
www.davighi-international.com



[davighi_international_milano](https://www.instagram.com/davighi_international_milano)



[DavighiInternational](https://www.facebook.com/DavighiInternational)

